

September 2024

# Custom Workspace

Features Overview & Sample Screenshots

# Workspace Overview & Features

Our custom workspace feature enables organizations to have a customized version of our database applications. With this feature, teams can track key information to their business, view custom pages and reports, and add other data sets.

## Features and options include:

- Customizable pages, views, and tables; allowing for the addition and customization of table fields, and the creation of new tables, pivot tables, pie charts, and graphs.
- Capability to upload datasets or external data sources to generate new views, tables, and charts.
- Enable manual input of data or content via a submission form. For example, you can use your workspace to track the progress of a state RFP or add comments and notes for other team members. Or we can create a project team directory, for example, of all the companies and contacts involved in a state RFP bid.
- Integrate other EVAdoption datasets — such as BEV VIO by state, number of DCFCs by network by state, utility make-ready programs, etc. — into your workspace and create calculations, new tables, and charts from that combined data. (*Additional cost per data set subscription.*)
- Upload site addresses and create a map view.
- Tasks and notifications (created by EVAdoption), such as a deadline to complete a section of an RFP.
- Automatic calculations across data fields, add conditional rules (if/then) to fields where you input or update data or content.
- Create roles if desired, such that, for example, only certain team members can input information.

# Workspace Sample Screenshots & Pricing

## Pricing

- **Set Up:** We charge a one-time set up fee of \$500. This assumes the set-up is not too complex, with a reasonable number of custom fields, data imports, custom pages/views, and integration of other EVAdoption data sets. *If much more data integration and customization is involved, we will provide a quote based on your requirements.*
- **Monthly fee:** In addition to your subscription fee for any of our services, the monthly fee for the custom workspace is based on the number of users. Integrating other EVAdoption data sets would require subscriptions for access to that data.
- **Breakdown:**
  - \$49/Month + \$500 Set-Up: 1 User
  - \$99/Month + \$500 Set-Up: 1-3 Users
  - \$199/Month + \$500 Set-Up: 4-10 Users

## Sample Screenshots

On the following pages are sample screenshots of a workspace with:

- Data pulled from our Utility Make-Ready Program and state incentives databases;
- Custom new fields — including whether a location was within a Justice 40 area, if competitor charging networks had locations nearby, screenshots of maps, some note fields for the team, and including names of site hosts, etc.
- This client had DCFC plans that included “with or without winning NEVI funding” — but they were looking to prioritize which states to focus on based on their deployment timelines, and other possible grant funding sources.

Alabama

Site ID

Site Number 00

Phase 1

 EDIT

### Location

Address 1000 Alabama St, Mobile, AL 36688

Eligible for NEVI (Y/N) Yes

Priority Market Yes

#### AFC Locations - Active-Planned Sites



| Site ID | Site Name  | Address         | Phase | Status |
|---------|------------|-----------------|-------|--------|
| 00      | Alabama St | 1000 Alabama St | 1     | Active |

## NEVI

|                             |  |
|-----------------------------|--|
| NEVI Application Date Known | Yes: Date Tentative/Broad                            |
| NEVI Event/Date Type        | <a href="#">RFI/RFP Application Available (Open)</a> |

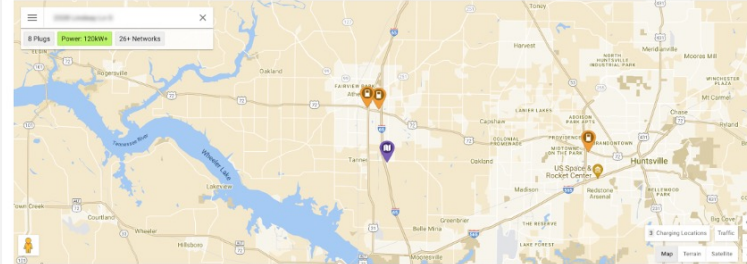
---

## Non-NEVI Grant

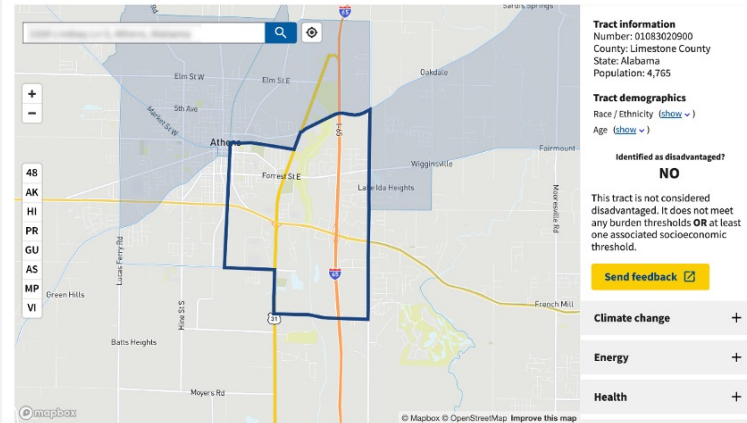
|                                     |  |
|-------------------------------------|--|
| Non-NEVI Grant Opps                 | Alabama DECA EV Charger Grant (Not open, but future funding window expected)           |
| Utility Make-Ready Programs         | Alabama Power  |
| Utility M-R Website                 | <a href="#">Link to Make-Ready Page</a>  |
| UMR Program Status                  | Limit Reached - Awaiting Renewal   |
| UMR Program Start Date              | 04/15/2023   |
| UMR Program Closes/End Date         | 05/31/2023   |
| UMR Program Fact Sheet/PDF (Link)   |  |
| DCFC Incentive Amount               | 150 kW \$20,000 – 2 ports minimum, 4 ports maximum                                     |
| State Grant                         | <a href="#">Alabama Volkswagen Settlement Eligible Mitigation Action Item Projects</a> |
| State Grant Website                 | <a href="#">Link to Make-Ready Page</a>  |
| State Grant Website Program Status  | Closed Permanently   |
| State Grant Program Start Date      | 06/15/2020   |
| State Grant Program Closes/End Date | 08/31/2020   |

## Sites

|                             |  |
|-----------------------------|--|
| Electrify America           | EA at Walmart - 5.5 miles away - 2 150 kW + 2 350 kW                   |
| Tesla Supercharger          | Athens Supercharger - Located at Fairfield Inns - 10 - 150 kw chargers |
| EVgo                        | N/A  |
| Other DCFC                  | NA   |
| PlugShare Area Map Link     |  |
| PlugShare Area Map: 120 kW+ |  |



|                               |  |
|-------------------------------|--|
| AFDC State DCFC CSV           | <a href="#">alabamaafdcmr302023.csv</a>  |
| Site Notes                    | In proximity to NEVI compliant site - 5.7 miles from Electrify America site located at the Athens Walmart. |
| Justice40 Site                | No   |
| Justice 40 Detail: Screenshot |  |





# CONTACT



Loren McDonald

CEO & Founder

[loren@evadoption.com](mailto:loren@evadoption.com)



Laura McDonald

Director of Operations

[laura@evadoption.com](mailto:laura@evadoption.com)